

FAQs:

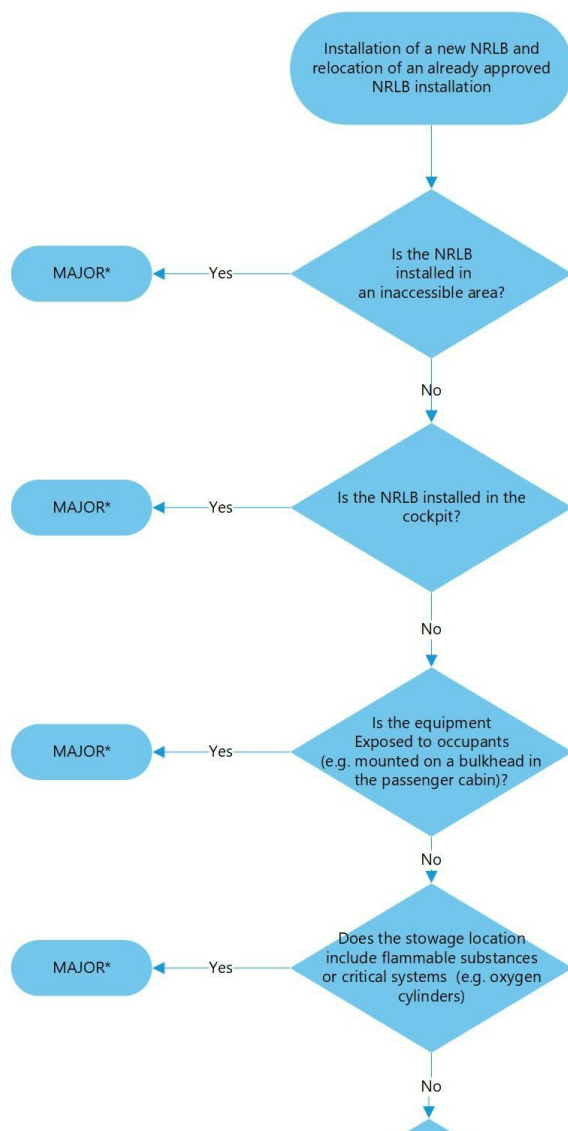
[Lithium batteries \(Non-rechargeable\), Supplemental Type Certificates](#)

Question:

Is there a flowchart helping on the minor/major classification of projects involving non-rechargeable lithium batteries (NRLB)?

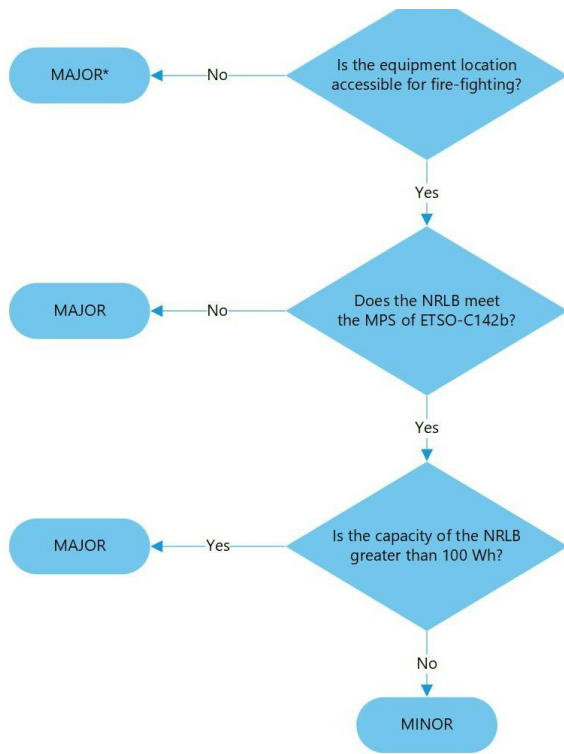
Answer:

Yes, see the following “Non rechargeable Lithium batteries installation minor/Major classification flowchart”



* Any subsequent relocation of equipment containing a battery with ETSO C142b authorisation may be classified as minor provided that the change has no impact on the original Safety Assessment and the new conditions of installation are not worse than the original ones, in terms of separation to oxygen lines/equipment, water, fuel, other flammable substances, heat points, separation from occupants (in case of exposed installation).

case of exposed installation).



Last updated:

24/11/2021

Link:

<https://www.easa.europa.eu/en/faq/132536>