



Airlines for America™
We Connect the World

Candidate Issue Paper

MSG-3 Logic Diagrams – Title Consistency

Boeing
Maintenance Programs Engineering

March 13, 2013

Situation/Issue

Published ATA MSG3 document has logic diagrams for each discipline (examples: Systems, Structures, Zonal, LHIRF) where the title nomenclature is different.

This Issue Paper proposes to introduce text that will allow consistency across MSG3 models such that these process flows will be easier to identify.

Problem

ATA MSG-3 document, revision 2011.

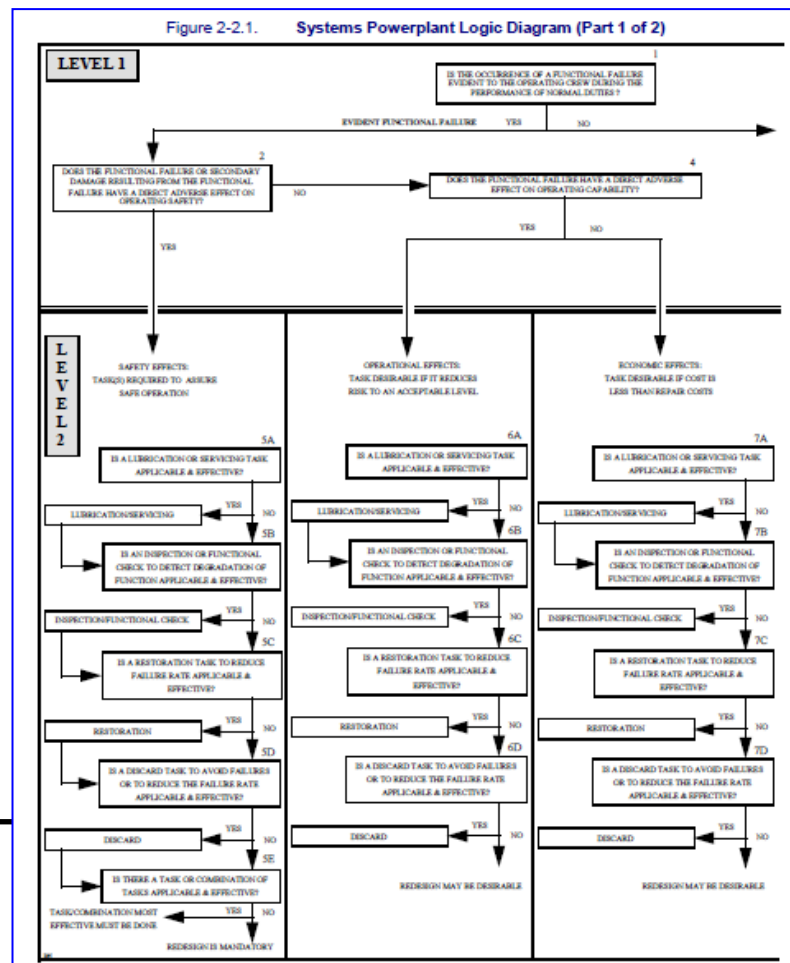
The working portions of MSG-3 are contained in four (4) sections and have unique logic diagrams defining the processes.

- Systems/Powerplant, components, APU's, [Section 2-3]
- Structures [Section 2-4]
- Zonal Inspections [Section 2-5]
- L/HIRF [Section 2-6]

Figure of Logic Diagrams are not labelled homogeneously.
Table of Contents does not properly identify item or location.

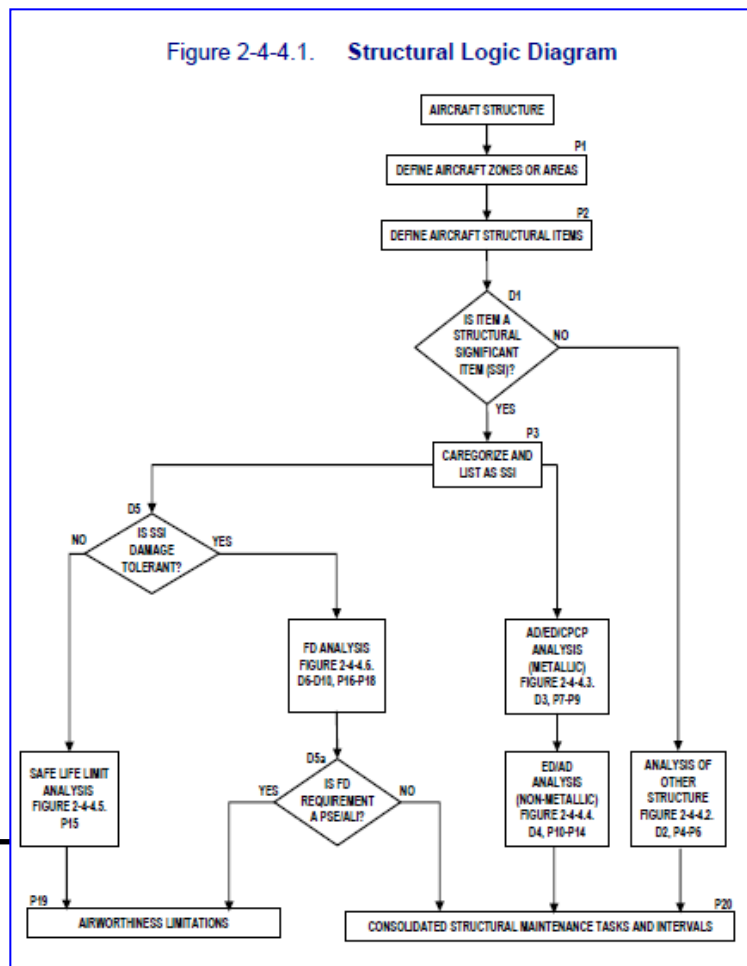
Example 1 – Systems / Powerplant

Figure 2-2.1. Systems Powerplant Logic Diagram (Part 1 of 2)



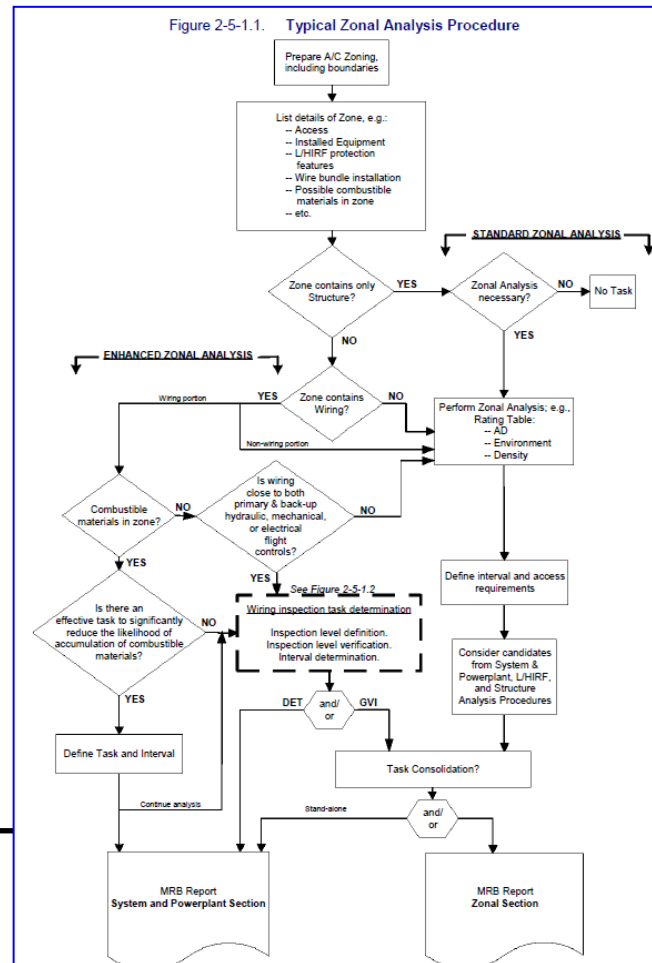
Example 2 - Structures

Figure 2-4-4.1. Structural Logic Diagram



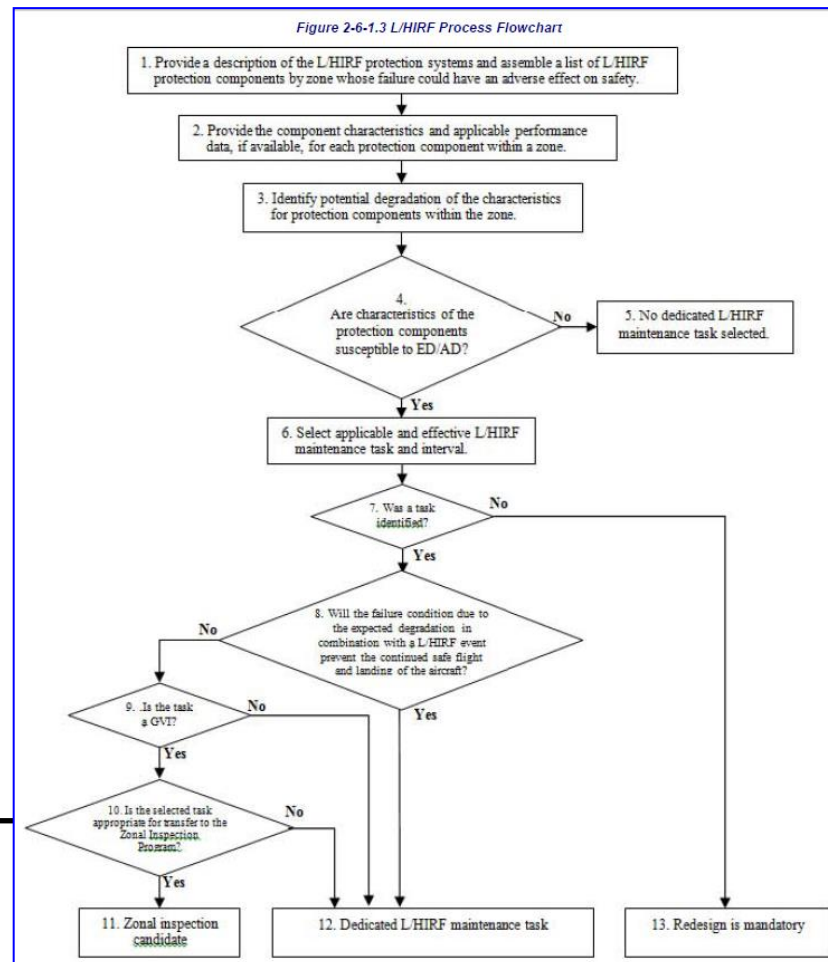
Example 3 – Zonal

Figure 2-5-1.1. Typical Zonal Analysis Procedure



Example 4 - LHIRF

Figure 2-6-1.3 L/HIRF Process Flowchart



Example 5 – Table of Contents

2-2.	Divisions of MSG-3 Document	26
2-3.	Aircraft Systems/Powerplant Analysis Procedure	29
2-3-1.	MSI Selection.....	29
1.	Step 1.....	29
2.	Step 2.....	29
3.	Step 3.....	30
4.	Step 4.....	30
5.	Step 5.....	30
6.	Step 6.....	30
2-3-2.	Analysis Procedure	31
2-3-3.	Logic Diagram	33
1.	Levels of Analysis.....	33
2-3-4.	Procedure	34

2-4.	Aircraft Structural Analysis Procedure	
2-4-1.	Aircraft Structure Defined	
1.	Significant and Other Structure	
2-4-2.	Scheduled Structural Maintenance	
1.	Structural Maintenance Tasks.....	
2.	Inspection Thresholds	
3.	Repeat Inspection Intervals.....	
4.	Fatigue Related Sampling Inspections.....	
5.	Corrosion Prevention and Control Programs (CPCP)	
6.	Age Exploration Program	
7.	Zonal Inspections.....	
8.	Inspection Results	
2-4-3.	Damage Sources and Inspection Requirements	
1.	Damage Sources.....	
2.	Inspection Requirements.....	
2-4-4.	Scheduled Structural Maintenance Development.....	
1.	Procedure	
2-4-5.	Rating Systems for Structural Significant Items	
1.	Rating Accidental Damage	
2.	Rating Environmental Deterioration (metals).....	
3.	Rating Environmental Deterioration (non-metals)	
4.	Rating Fatigue Damage.....	

2-5.	Zonal Analysis Procedure	74
2-5-1.	Procedure	74
2-5-2.	Zonal Inspection Task Intervals.....	77
2-6.	Lightning/High Intensity Radiated Field (L/HIRF) Analysis Procedure	78
2-6-1.	L/HIRF Maintenance	79
1.	L/HIRF Protection Analysis Concepts.....	79
2.	L/HIRF Protection Analysis Ratings	79
3.	L/HIRF Protection Analysis Process and Flowchart (see Figure 2-6-1.3)	79
	Analysis Approval.....	82
Appendix A.	Glossary.....	83
Annex 1.	References.....	91

Proposal/Recommendation

Replace Title in Figures as such:

Figure #	Current Title	Proposed Title
2-2.1	Systems / Powerplant Logic Diagram	Systems / Powerplant MSG-3 Logic Diagram
2-4-4.1	Structural Logic Diagram	Structures MSG-3 Logic Diagram
2-5-1.1	Typical Zonal Analysis Procedure	Zonal MSG-3 Logic Diagram
2-6-1.3	L/HIRF Process Flowchart	L/HIRF MSG-3 Logic Diagram

Proposal (continued)

Correct the Table of Contents to the Proposed Title of the Diagram
Correct Systems Figure # to the 2-3 section
Correct the page location



Airlines for America™
We Connect the World

THANK YOU